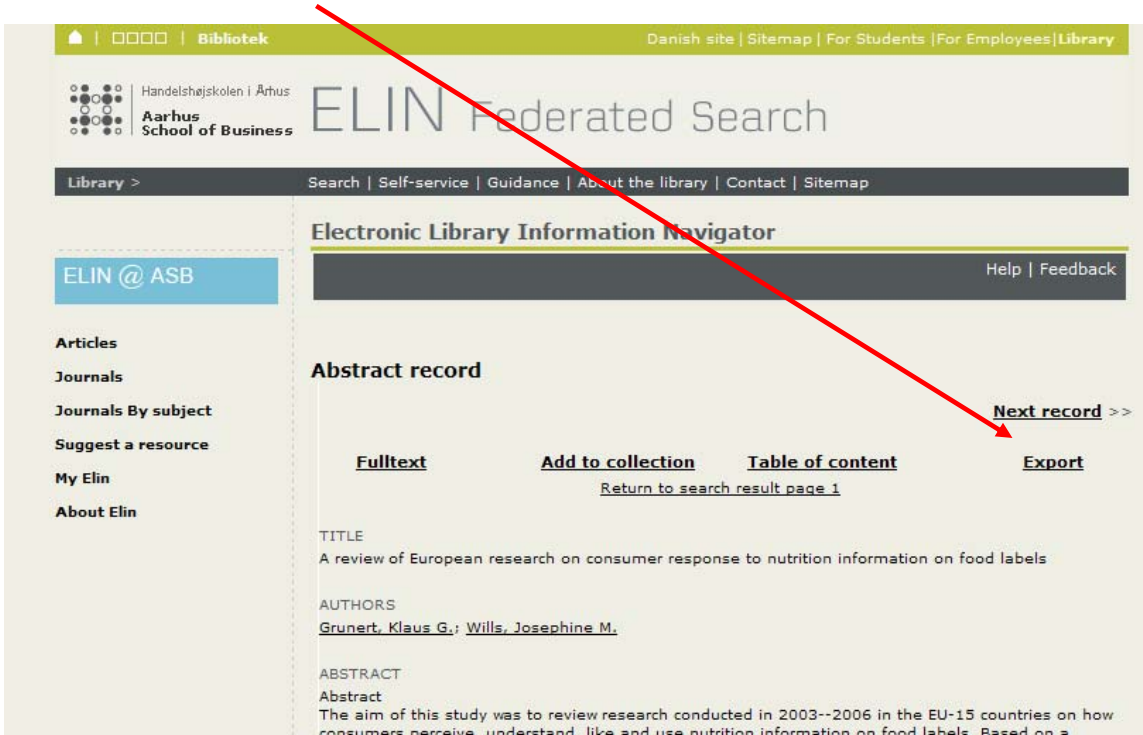


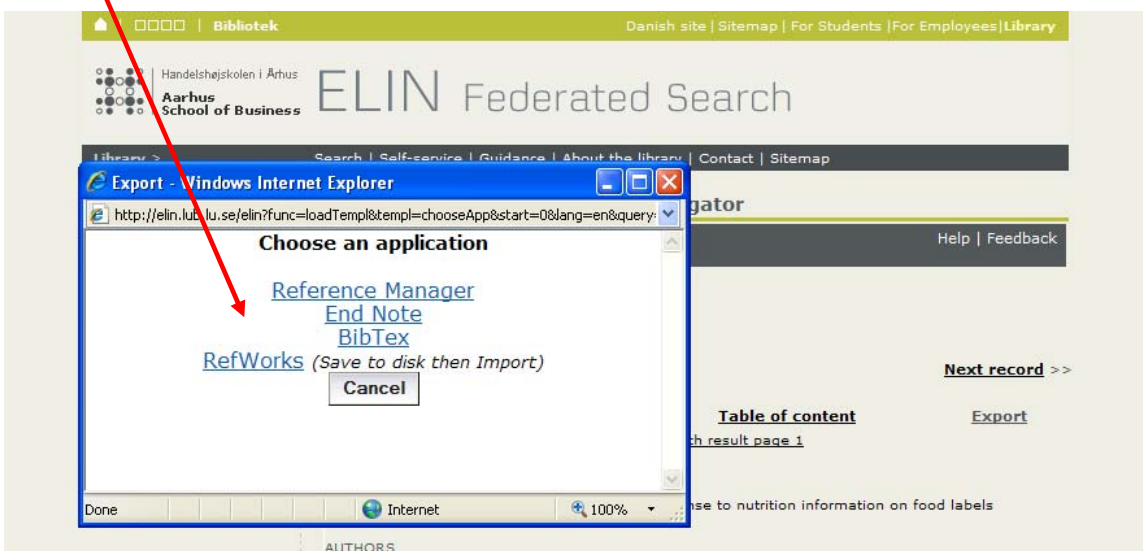
# Import of references from ELIN to your RefWorks database

When you have found a relevant reference in ELIN you can export it into RefWorks.

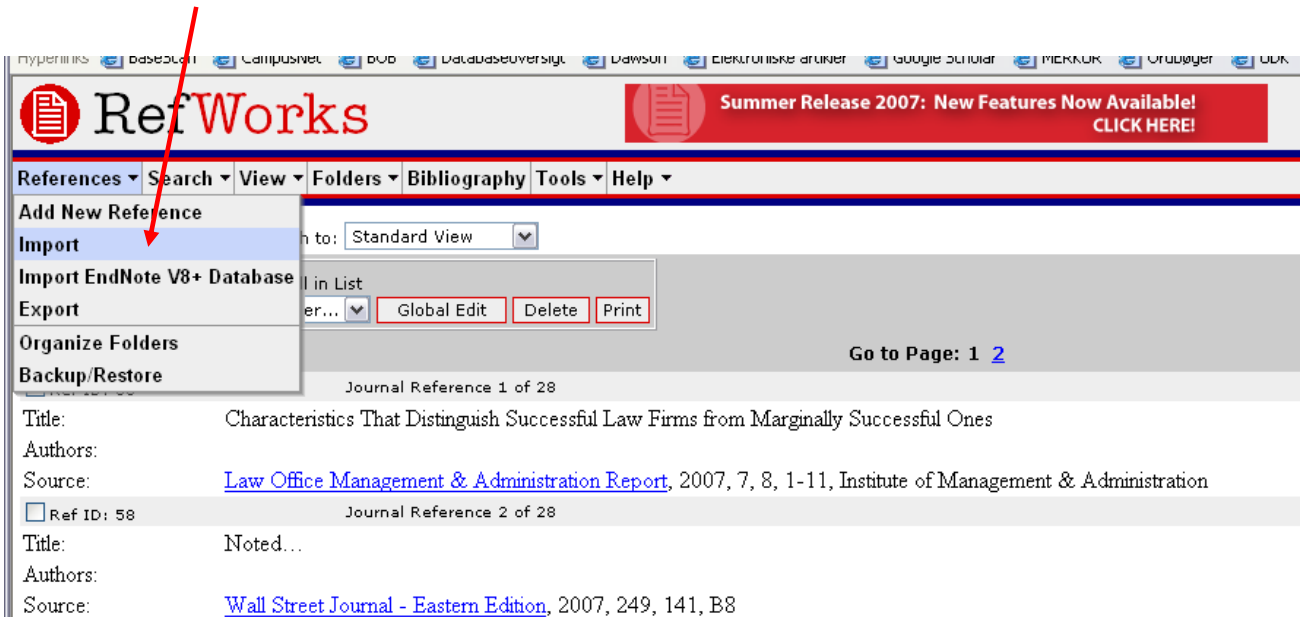
- Click on **Export**



- Right click on **RefWorks**
- Save a txt file on you desktop for example



- Go to **References** in your RefWorks database
- Choose **Import**



1. **Import Filter/Data** – choose **RIS Format**
2. **Database** – choose **RIS Format**
3. **Import References into** – here you can put your reference into a specific folder
4. **Import Data from the following Text File** – go to your desktop to find the txt file you saved
5. Click on **Import** and your reference is put into your RefWorks database

